



PLOT, SAN PEDRO DE ALCÁNTARA

R4880173

REF

0

BEDROOMS

0

BATHROOMS

710 m²

BUILT SIZE

€ 975,000

Price

Exclusive, consolidated urban plot in a prime location in San Pedro de Alcántara, adjacent to Guadalmina Alta and Altavista. With an area of 1,300 m², this property is surrounded by green spaces and offers panoramic views of the sea and mountains. The location is exceptional, near golf courses like Guadalmina, Atalaya, and La Quinta, just minutes from the beach of San Pedro de Alcántara, as well as supermarkets and local amenities. Only 5 minutes from Puerto Banús and 45 minutes from Málaga Airport.

The plot has an approved building license for a luxury villa, including a basic design project for a villa with 710 m² of living

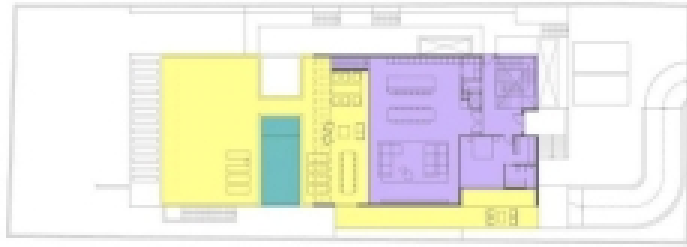


PLANTA JARDÍN
366.00 m²

TERRAZA
34.40 m²

PARKING SUBTERRÁNEO
127.30 m²

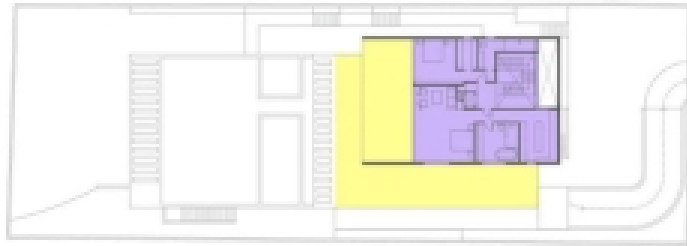
www.investts.com
info@investts.com
+34 693 800 888



PLANTA PRINCIPAL
202.40 m²

TERRAZA
258.30 m²

PISCINA
27.40 m²



PLANTA ALTA
142.40 m²

TERRAZA
146.60 m²

The render images and drawings included in this brochure are for illustrative purposes only and may depict additional features such as landscaping, furniture, and lighting, which are not included in the actual property sale. Potential buyers are advised to refer to the detailed property listing and consult with the real estate agent for an accurate description of the property's features and inclusions.

TOTAL VIVIENDA 710.80 m²
TOTAL TERRAZAS 439.30 m²